



www.leoardent.com



Sessions

1. Introduction – Why Change?
2. Specific Changes in ISO 14001: 2026
3. Going Forward
4. Q & A

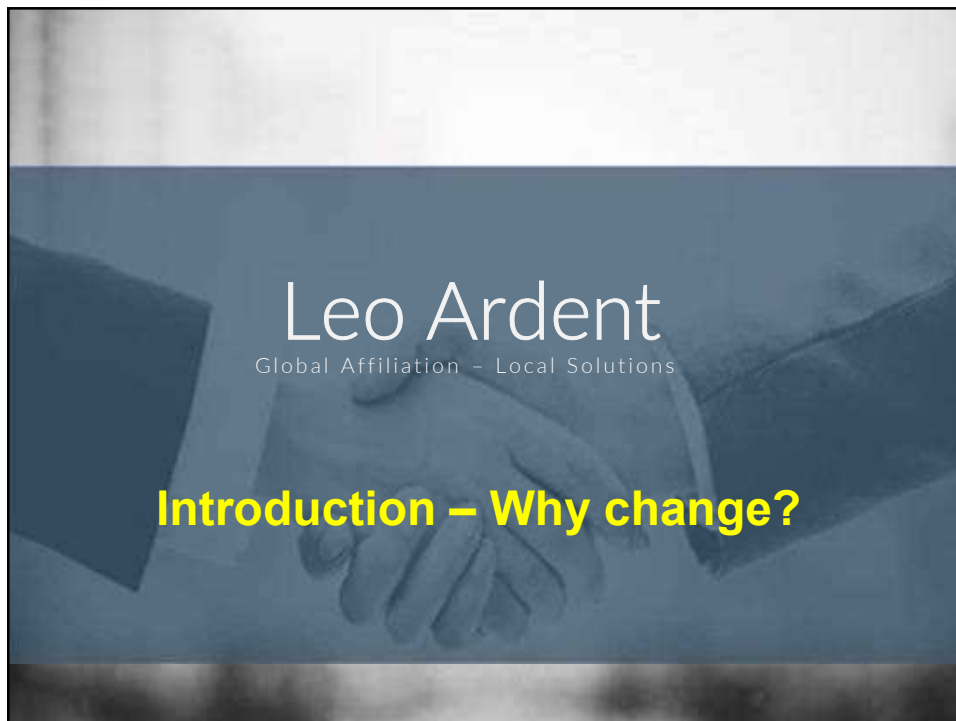


Leo Ardent
Make a Difference

| Official Delivery Partner of SMMT UK

WBR_EMS00_UR1
Page 3

www.leoardent.com



Why Update Now?

- Why the need for EMS Update?

Protocol for periodic review to keep pace with industry

Halted in year 2022 due to Covid

New concerns on resource scarcity and sustainability

1996 1st

2004 2nd

2015 3rd

2026 4th

International Organization for Standardization
ISO 14001
Environmental management systems — Requirements with reference to ISO 9001:2015

Leo Ardent
Make a Difference | Official Delivery Partner of SMMT UK

WBR_EMS00_UR1 Page 5

What triggers changes for ISO 14001?

- Evolving environmental expectations
- Climate change considerations
- Enhanced focus on sustainability
- Greater stakeholder pressure
- Better integration with business strategy

Climate Action

Biodiversity

Resource Efficiency

Leo Ardent
Make a Difference | Official Delivery Partner of SMMT UK

WBR_EMS00_UR1 Page 6



www.leoardent.com

Key Changes in ISO 14001: 2026

Main Changes:

1. Clearer guidance and usability
2. Stronger focus on leadership and organization culture
3. Clear expectations on Change Management
4. Expanded focus on external providers
5. Stricter alignment with environmental priorities

Leo Ardent
Make a Difference

| Official Delivery Partner of SMMT UK

WBR_EMS00_UR1
Page 8

Specific Changes in ISO 14001: 2026

Technical changes

- 4.1 Context of the Organization
- 4.2 Understanding the needs and expectations of interested parties
- 4.3 Determining the scope of the environmental management system
- 6.3 Planning of changes
- 8.1 Operational planning and control

Editorial changes

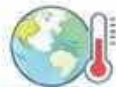
- 3 Terms and definitions
- 6.1.4 Risks and opportunities
- 6.1.5 Planning action
- 9.2.2 Internal audit programme

4.1

4.1 Understanding the organization and its context

The organization shall determine external and internal issues...

- These issues shall include environmental conditions..., such as **pollution levels, availability of natural resources, climate change, biodiversity or ecosystem health**



Climate Action



Biodiversity



Resource Efficiency

4.2

4.2 Understanding the needs and expectations of interested parties

The organization shall determine:

a) the interested parties...

b) ...

- **NOTE1** Relevant interested parties can have needs and expectations related to environmental conditions, such as pollution levels, availability of natural resources, climate change, biodiversity or ecosystem health.
- **NOTE2** The relevant needs and expectations of interested parties, other than legal requirements, become a compliance obligation when the organization decides to comply with them.

4.3

4.3 Scope of the environmental management system

When determining this scope, the organization shall consider:

a) the external and internal issues...

b) ...

c) ...

d) ...

e) its authority and ability to exercise control and influence over the life cycle of its activities, products and services.

6.3

New Requirement on Change Management

6.3 Planning of changes

- determines the need for changes that affect EMS
- the changes shall be carried out in a planned manner.
- changes shall be managed to protect system integrity



8.1

- 8.1 Operational planning and control
- ...The organization shall ensure that **externally provided process(es), products or services** that are relevant to the intended outcomes of the environmental management system are controlled or influenced.
- This was previously "outsourced processes"

" This broadens the scope from 'hired services' to anything coming from outside that impacts environmental performance (e.g., raw materials, logistics, or waste contractors)."

Editorial changes

Editorial changes

3 Terms and definitions

- Replace 'Risks' with the simplified 'risks and opportunities'
- 'indicator' is now 'quantitative, qualitative or binary' (yes/no), previously was "measurable representation"

6.1.4 Risks and opportunities

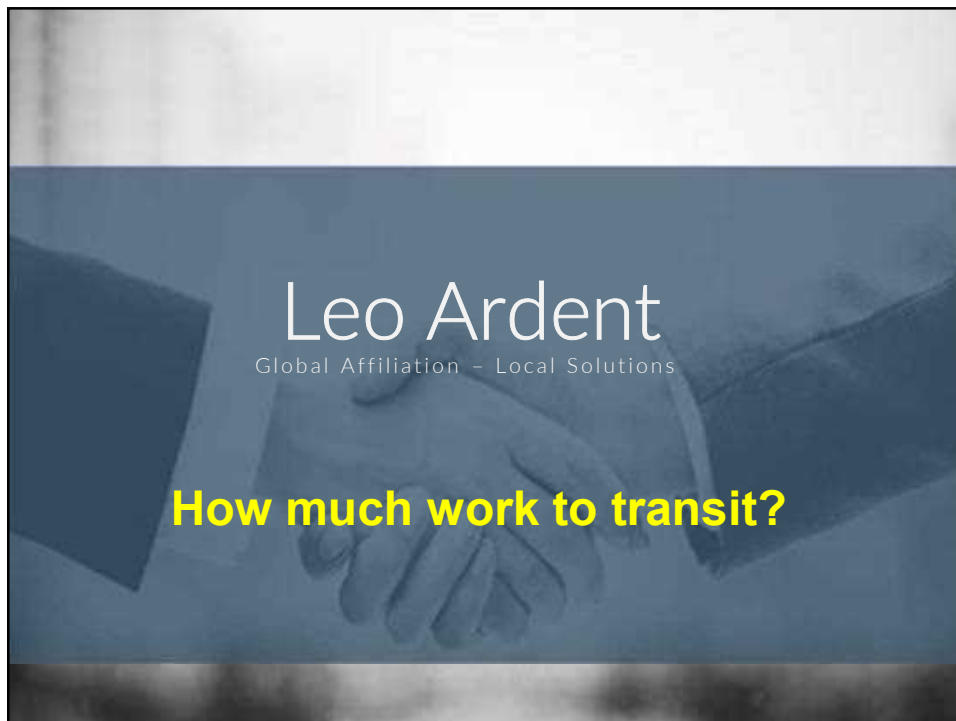
- Reorganised to be on its on, previous was 6.1.1

6.1.5 Planning action

- Previously as 6.1.4

9.2.2 Internal audit programme

- Added 'audit objectives' into the phrase define audit criteria and scope



How much work to transit from 2015?

- “We have been pro-active with our EMS approach”
→ moderate changes only!
- “We have been doing the bare minimal or just enough to clear external audit”
→ expect to do more!

- For most organizations, the work should be **moderate!**
- Fundamental and framework of EMS remains the same
- But the **scope** is now **enhanced** over **lifecycle context!**

The update require more documentation?

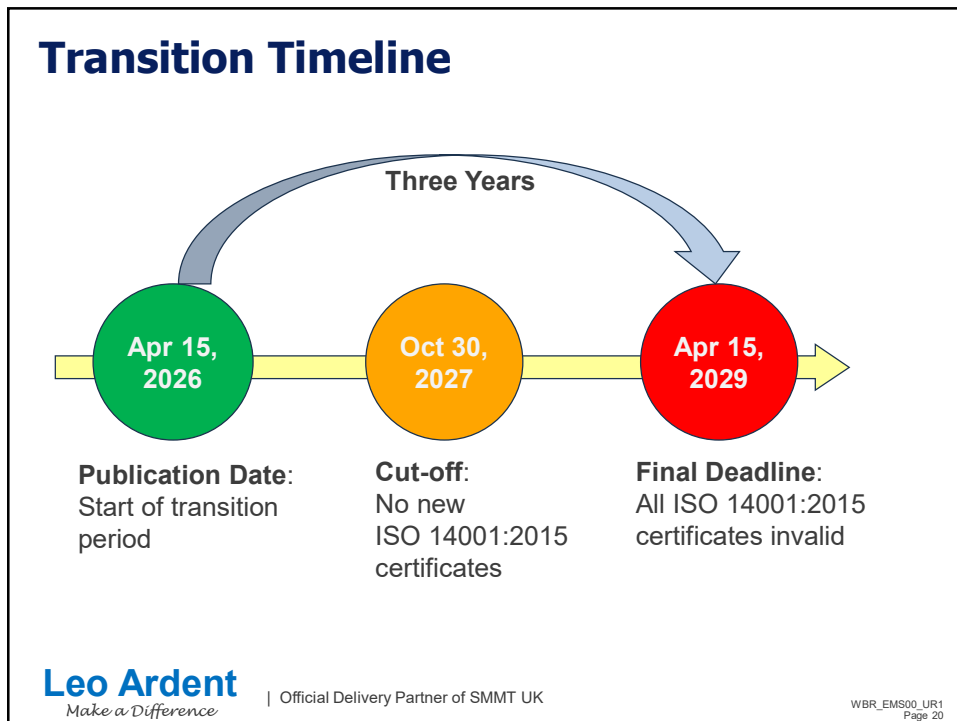
- Policy on documentation **remains the same**
- But changes in scope and context of organizations may triggers **new** or **changes** to documentation

Rule of thumb:

- Document where it is made **mandatory**, and
- Elsewhere, have documents where it is **value-added** on operations effectiveness and traceability



www.leoardent.com



Transition Pathway

Planning and Deployment

The diagram illustrates a 9-step transition pathway. The first four steps (1-4) are grouped under the 'Planning Stage' (green arrow), and the remaining five steps (5-9) are under the 'Deployment Stage' (blue arrow). Each step is represented by a numbered icon and a brief description.

Planning Stage				Deployment Stage				
1	2	3	4	5	6	7	8	9
Learn about Changes	Secure Leadership Commitment	Identify Gaps	Conduct Training	Implement Pilot changes	Review Pilot Changes	Engage Cert Body	Internal Audit & Mgmt Review	Transition Audit

Leo Ardent
Make a Difference

| Official Delivery Partner of SMMT UK

WBR_EMS00_UR1
Page 21

Training Module Guidance

Your Current Status	Your Goal	Recommended Course	Duration
Certified in ISO 14001:2015	Update knowledge on new 2026 requirements	ISO 14001:2026 Transition (EMS22T)	1 Day
Existing EMS Auditor	Upgrade auditing skills to cover 2026 technical revisions.	EMS Auditor Transition (EMS24T)	1 Day
New to ISO 14001	Understand requirements and learn basic EMS implementation.	Understanding ISO 14001: 2026 EMS (EMS22)	2 Days
New to Auditing	Learn to conduct internal audits and report on EMS performance.	EMS Internal Auditor Training (EMS24)	2 Days
Mixed Team (Half trained / Half new)	Standardize knowledge across the team and bridge the gap between versions.	Go for default 2-day modules, the changes are highlighted (EMS22 & EMS24)	2 + 2 Days
Time-Constrained / Too busy for continuous training	Access flexible, self-paced e-learning	ISO 14001:2026 E-Learning Module	Self-Paced

Leo Ardent
Make a Difference

| Official Delivery Partner of SMMT UK

WBR_EMS00_UR1
Page 22

Public Training in July/ Aug 2026

EMS 14001 2026 Transition Training

June 25 (Thu) – Penang

July 3 (Fri) - KL

July 23 (Thu) – Penang

Aug 27 (Mon) - KL

Leo Ardent
Make a Difference

| Official Delivery Partner of SMMT UK

WBR_EMS00_UR1
Page 23

www.leoardent.com

Q & A

www.leoardent.com



Leo Ardent
Make a Difference

| Official Delivery Partner of SMMT UK

WBR_EMS00_UR1
Page 24